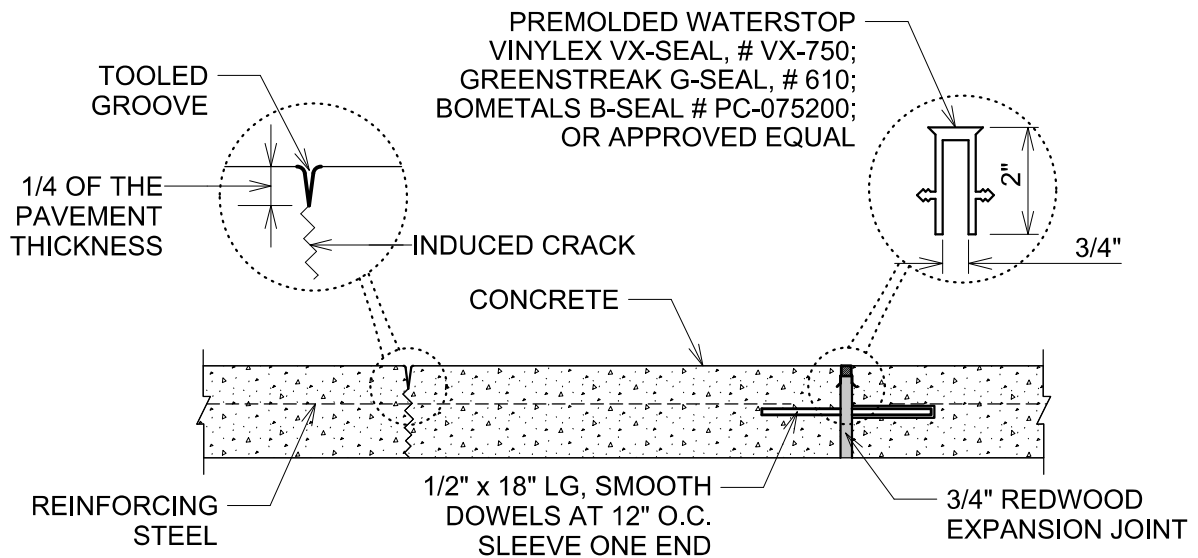
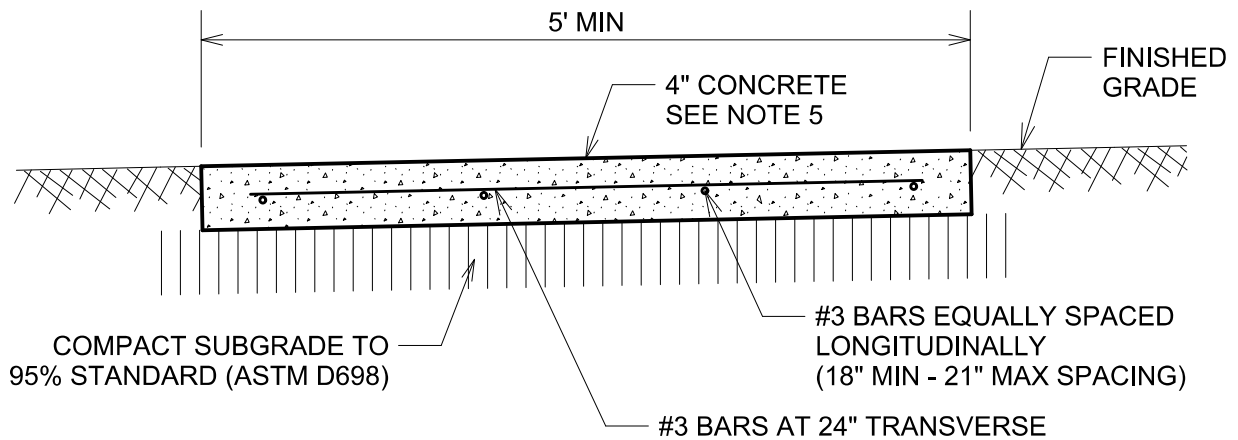


GENERAL NOTES

1. REINFORCING STEEL SHALL BE ASTM A615 GRADE 60 IN ACCORDANCE WITH TxDOT ITEM 440.
2. EXPANSION JOINTS SHALL BE LOCATED AT DRIVEWAYS AND OTHER FIXED OBJECTS AND AT 40' MAXIMUM INTERVALS ALONG THE SIDEWALK.
3. TOOLED CONTRACTION JOINTS SHALL BE LOCATED AT REGULAR INTERVALS EQUAL TO THE WIDTH OF THE SIDEWALK.
4. CONCRETE SHALL MEET THE REQUIREMENTS OF TxDOT ITEM 421 - HYDRAULIC CEMENT CONCRETE, CLASS A, 3,000 PSI.
5. SIDEWALKS SHALL BE SLOPED IN ACCORDANCE WITH TEXAS ACCESSIBILITY STANDARDS.
6. ALL REBAR TO BE SET ON BAR CHAIRS. PLASTIC OR METAL BAR CHAIRS ARE ACCEPTABLE; NO BRICKS, BROKEN CONCRETE, ROCKS, ETC.



CONCRETE SIDEWALK (DETACHED FROM CURB)

STANDARD CONSTRUCTION DETAILS

DATE: 07/20/21

REVISED
DATE: 07/20/21

PAV - 11